

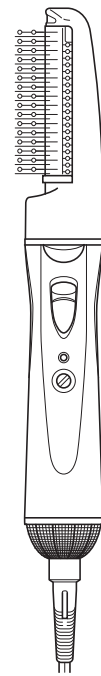
User Manual

Hair Styler

NBIC40

For household use only

- Before use, please read this manual and be sure to use the appliance properly. In particular, be sure to thoroughly read and closely follow the Safety Warnings, as they are precautions for preventing personal injury and property damage.
- Store the manual in a location where it can be easily accessed at any time.



Safety Warnings

- After use, turn off and unplug the unit.
- Pull on the power plug instead of the power cord when unplugging the styler.
- Before use, check the voltage used in the region where you are located, and set the voltage switch accordingly.
- Do not use the styler if the inside of the main unit turns red, if it generates smoke, or if you hear the sound of foreign matter moving inside it.
- Regarding the power cord, do not damage, forcibly bend, twist, pull, load any heavy weight onto, bring near to any hot object, pinch, modify, or bundle it when using the styler. Do not wrap the cord around the main unit.
- Long-term use or misuse may cause the power cord to become damaged. Do not use it if:
 - The styler sometimes does not blow air;
 - The power cord remains twisted;
 - The base of the power cord or plug is deformed or damaged; or
 - The power plug is loose in the AC outlet.
- If the supply cord is damaged, it must be replaced by the manufacturer, its service agent, or similarly qualified persons in order to avoid a hazard.
- Do not leave the styler with the power switch turned ON. Do not put the styler on anything flammable or sensitive to heat, such as a mattress, paper, or plastic bags.
- Do not use it on babies. Do not have a child close by when using it. This styler should be stored out of reach of children.
- This appliance is not intended for use by persons (including children) with reduced physical, sensory or mental capabilities, or lack of experience and knowledge, unless they have been given supervision or instruction concerning use of the appliance by a person responsible for their safety. Children should be supervised to ensure that they do not play with the appliance.
- Do not use the styler near any flammable material, such as gasoline, benzene, thinner, gas, or hair cosmetics agents. Do not use the styler with hairspray.
- Do not block the air intake or outlet.
- Do not put hairpins or any other foreign objects into the air intake or outlet.
- Examine the attachment before attaching it, and make sure that there are no foreign objects inside.
- Do not look into the air outlet while it is in use.
- Keep the air intake at least 10 cm away from hair to prevent hair from being sucked into the styler during use.



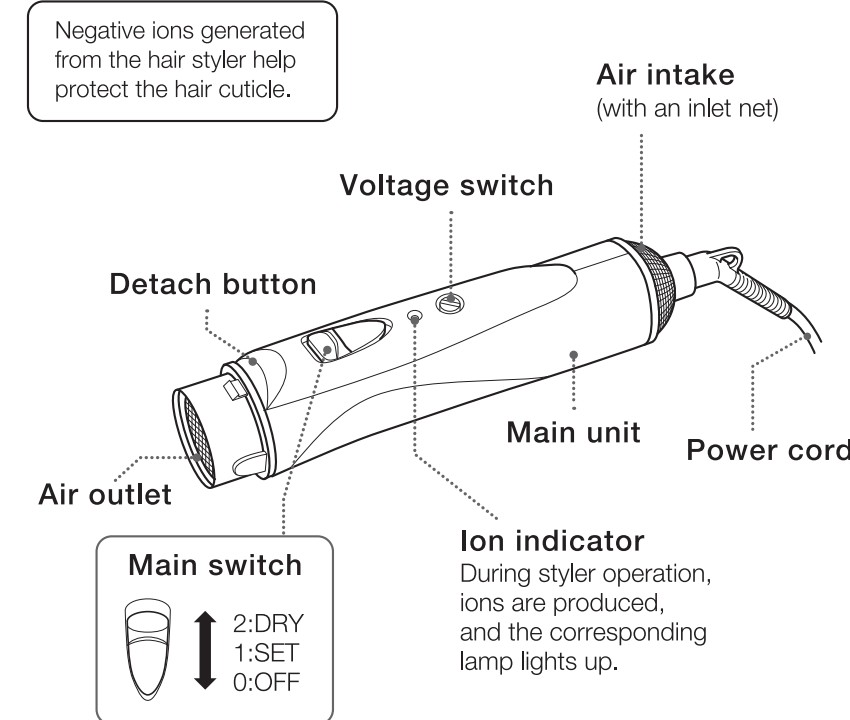
This symbol indicates that this product must not be used near water, such as baths or basins with shower water.

Do not use this appliance near bathtubs, showers, basins or other vessels containing water. When the appliance is used in a bathroom, unplug it after use since the proximity of water presents a hazard even when the appliance is switched off.

For additional protection, the installation of a residual current device (RCD) having a rated residual operating current not exceeding 30 mA is advisable in the electrical circuit supplying the bathroom. Ask your installer for advice.

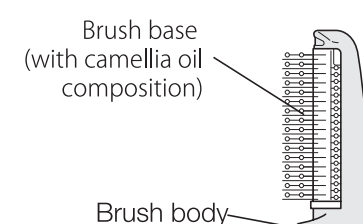
- Do not use the styler with wet hands.
- Do not place the styler in water or pour water on it. Store it in a place with low moisture.
- Do not modify the styler. No one other than repair engineers should disassemble or repair the styler.
- Clean the air intake and inlet net at least once a month.
- Do not allow too much hair to wrap around the attachment.
- Do not touch any attachment or the air outlet during or immediately after use, and also avoid any accidental contact with your skin, as the attachments and the outlet will be hot.
- The styler is intended for the hair-drying and styling of human hair. Do not use it for other purposes, such as for pet hair.
- Do not let the styler fall or sustain impact. Do not use it if it has been damaged.
- Do not touch the styler with hair dye stained hands. Never apply alcohol, benzene, or enamel remover.
- Do not apply hairstyling products onto the attachment directly.
- The styler is not intended for business use. Keep it away from unspecified usage by a large number of people.

Part names and functions



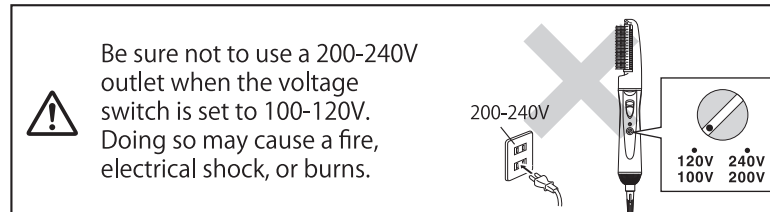
Attachment

Styling blow brush



How to use

- 1 Add the attachment to the main unit.
 - Align the concave part of the attachment with the convex part of the main unit and push firmly.
 - To detach, pull the attachment away while maintaining pressure on the detach button.
- 2 Using a coin or the like, set the voltage switch to the voltage used in the region where you are located.



- 3 Insert the power plug into an AC outlet.
- 4 Set the main switch to "2" or "1".
- 5 After use, turn off and unplug the unit.

Maintenance

Unplug the appliance and allow it to cool before performing maintenance.

Main unit

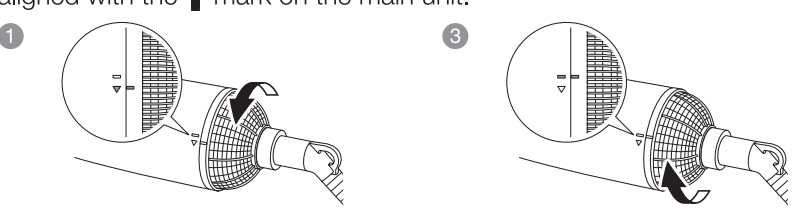
Wipe away any dirt with a dry soft cloth. To clean off difficult dirt, immerse a cloth in soapy water or neutral detergent diluted with water, wring it dry, and wipe away the dirt.

Troubleshooting

Issue	Possible cause	Solution
The air stream is extremely weak.	The voltage switch is not set to the voltage used in the region where you are located.	Set the voltage switch to the proper voltage.
The main body or the air stream is extremely hot.	The air intake is blocked. Dust and hair have become attached to the air intake.	Turn off and unplug the appliance and wait until the main unit has cooled completely. Before switching the appliance on again, check the air intake and make sure that it is not being blocked by dust or hair.
Sparks appeared from the air outlet, and then the appliance stopped working. (Stoppage due to safety mechanism function.)		
I cannot feel the effect of the negative ions.	The effect of the negative ions is less apparent in people with the following hair types. <ul style="list-style-type: none"> • Curly hair • Wavy hair • Thin, fine hair • Short hair • Recently straightened hair • Naturally oily hair 	
Other abnormalities or defects are present.		Immediately stop using the styler.

Air intake

- 1 To remove the net from the main unit, turn the inlet net in the direction of the arrow in the illustration until the mark on the net is aligned with the mark on the main unit.
- 2 Use a soft brush or the like to remove dust and hair from the air intake and inlet net.
- 3 Insert the inlet net into the main unit by aligning the mark on the net with the mark on the main unit, and then turn the net in the direction of the arrow in the illustration until the mark on the net is aligned with the mark on the main unit.

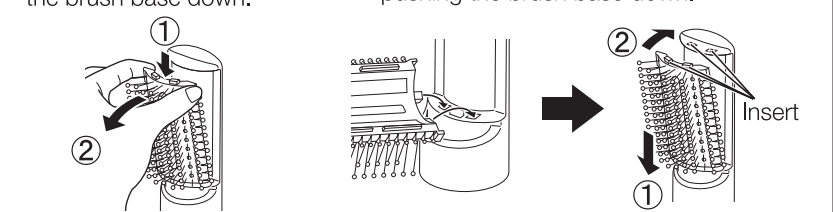


Attachment

Remove the attachment from the main unit, and use a soft brush or the like to remove dust and hair, etc. When dirt build-up is a concern, wash the attachment in water and allow to dry completely.

The brush base may be cleaned after removing it from the brush body.

- How to detach: Remove the brush base from the brush body while pushing the brush base down.
- How to attach: Insert the bottom of the brush base into the brush body, and insert the top while pushing the brush base down.



Specifications	
Product Number	NBIC40
Power Source	100-120V/200-240V~ switchable dual voltage type 50-60Hz
Power consumption	450-650W
Power cord Length	1.7m