

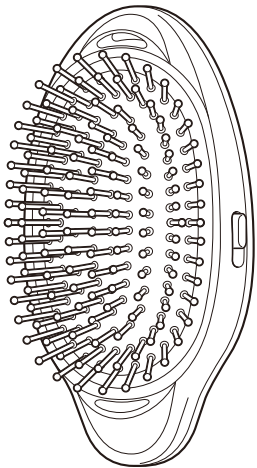
User Manual

Ionic Styling Brush

NTIB10

For household use only

- Thank you for choosing Tescom products.
- Before use, please read this manual and be sure to use this product properly.
In particular, be sure to read the Safety Warnings.
- Store the manual in a location where it can be easily accessed at any time.



Part Names and Functions

Product and part specifications are subject to change without notice.

Negative ion air outlet

The negative ions generated by the negative ion air outlet inhibit static electricity.

Main switch

Press once Negative ions (ION)
↓
Press again Negative ions & vibration (ION+VIB)
↓
Press again OFF

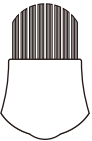
Light

Light goes on when power is on.
Light flashes when battery is low.

Main unit
Detach switch

Brush section
Includes micro-capsules composed with camellia oil.

Accessories
Cleaning brush



The brush section and cleaning brush can be ordered separately.
Please contact a store that stocks Tescom products.

Safety Warnings

Caution



Prohibited

Children must not use this product alone.
Do not use this product on infants, children, or pets.
Keep product and accessories out of reach of children.

Do not use simultaneously with a hair dryer.

Warning



Precautions

Stop use immediately if it makes one feel unwell, or you feel any pain or abnormality.

- Follow these battery guidelines and use them correctly.
- Always use alkaline batteries.
 - Insert batteries with the correct + and – orientation.
 - Remove dead batteries immediately.
 - When the product will not be in use for a long time, remove the batteries.
 - Follow all warnings written on the batteries.
 - Use batteries that have not reached their expiration date.

Do not put metal objects into the negative ion air outlet, or touch directly with fingers.



Prohibited

Do not use if there are any scalp abnormalities, such as dermatitis, severe sunburn, or injury.

Do not use for any purpose other than brushing human hair.

Do not directly apply hairstyling products.
Do not use as a tool for washing hair.

Do not let the dryer fall or sustain impact.
Do not use if it has been damaged.

The brush is not intended for business use.
Keep it away from unspecified usage by a large number of people.

Do not use or leave product in a bathroom or place with high humidity.



Prohibited

Do not place the brush in water.
Do not pour water on it. Do not use with wet hands.

Do not modify. No one other than repair technicians should disassemble or repair the brush.

Never apply alcohol, benzene, or enamel remover.

Product Maintenance

Perform maintenance after switching off. Do not wash with water.

Main unit

- Wipe away stains with a dry soft cloth.
To clean off difficult dirt, immerse a soft cloth into soapy water or neutral detergent diluted with water, wring it dry and wipe away the dirt.
- Wipe the inside of the removed brush section with a dry soft cloth.
- Remove dust from the negative ion air outlet with a vacuum cleaner.
When dust is stuck, wipe away with a thin cotton swab, taking care not to touch the needles in the center.

Brush section

Remove dust and hair with the included cleaning brush.

Specifications

Product Name	Negative Ion Hair Brush
Product Number	NTIB10
Power Source	Two 3.0V --- AAA alkaline batteries (LR03)

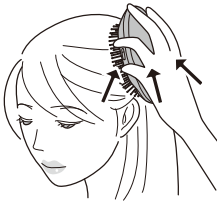
How to Brush Hair

Negative Ions

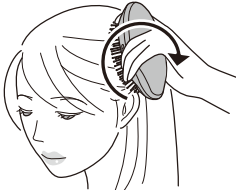
- 1 Turn product on, and start brushing from the ends of the hair. When there are no more tangles, gently brush the hair from roots to tips.

Negative Ion + Vibration

- 2 Press the main switch and press brush to scalp after the brush starts vibrating. Move the brush slowly, lifting the hair from the roots outward.



- 3 Press and move the brush in a circular motion in places where the scalp is tired.



- 4 Brush and arrange hair slowly from roots to tips, spreading negative ions throughout all of the hair.