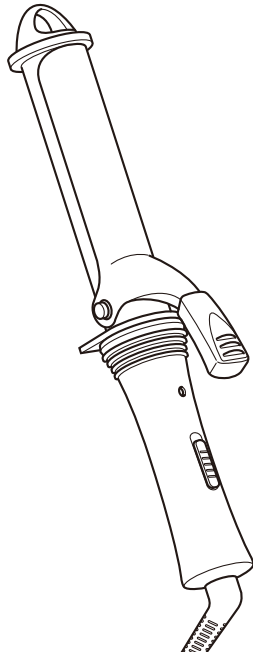
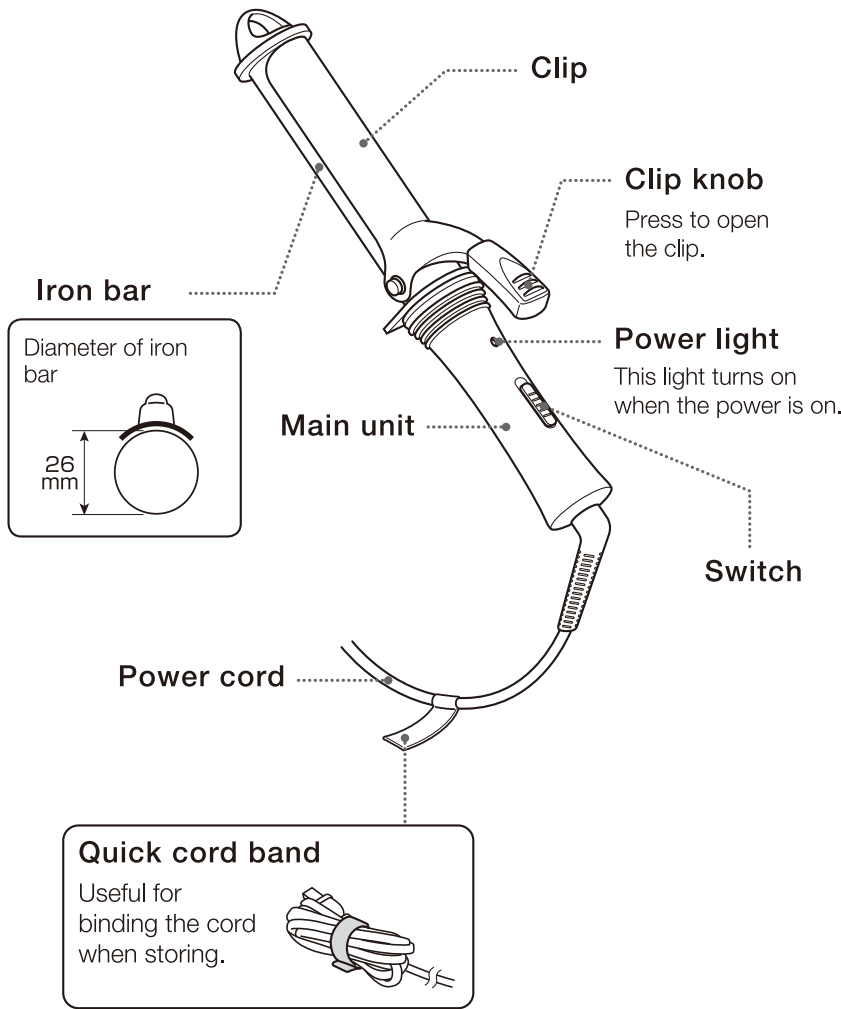


- Before use, please read this manual and be sure to use the iron properly.
The “Safety Warnings” in particular are for preventing harm to people and damage to property. Read and follow them carefully at all times.
- Store the manual in a location where it can be easily accessed at any time.



Part Names and Functions



Safety Warnings

- Before using the appliance, check that it is compatible with the power supply in your locality.
- Before using the appliance, ensure that there is no damage to the power cord and plug or to the main unit.
- Do not let the appliance fall or sustain impact.
- Do not pull on the power cord. Do not coil the power cord around the main unit.
- After use, be sure to turn off the switch and remove the power plug from the outlet.
- When the appliance is connected to the power supply, never leave it unattended.
- Do not soak the appliance or wet it with water or other liquid. Do not handle the appliance with wet hands.
- Do not store the appliance in areas with high humidity or near water.
- Do not use the appliance within reach of children. Do not store the appliance within reach of children.
- Do not place the appliance on bedding, paper, vinyl, or any other material that is flammable or intolerant to heat. Do not use the appliance near gas or flammable fuels. After using the appliance, wait until it has cooled completely before storing it.
- Do not use the appliance on wet hair.
- Do not apply the iron bars to the same part of the hair for more than 10 seconds.
- Do not use the appliance on hair to which perming or straightening solution has been applied.
- The appliance is not intended for business use. Keep it away from unspecified usage by a large number of people.
- Never apply alcohol, benzine, or enamel remover.
- If the iron bars do not become hot or if the appliance displays any other abnormalities, immediately turn off the switch and unplug the appliance.
- The appliance must only be disassembled by an authorized repair engineer.
- This appliance is not intended for use by persons (including children) with reduced physical, sensory or mental capabilities, or lack of experience and knowledge, unless they have been given supervision or instruction concerning use of the appliance by a person responsible for their safety.
- Always place the appliance with the stand, if any, on a heat-resistant, stable flat surface.

- Children should be supervised to ensure that they do not play with the appliance.
- If the supply cord is damaged, it must be replaced by the manufacturer, its service agent, or similarly qualified persons in order to avoid a hazard.

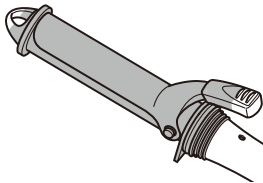


This symbol indicates that this product must not be used near water, such as baths or basins with shower water.

Do not use this appliance near bathtubs, showers, basins or other vessels containing water.
When the hair iron is used in a bathroom, unplug it after use since the proximity of water presents a hazard even when the hair iron is switched off.
For additional protection, the installation of a residual current device (RCD) having a rated residual operating current not exceeding 30 mA is advisable in the electrical circuit supplying the bathroom.

BURN HAZARD

Keep appliance out of reach from young children, particularly during use and cool down.
The part indicated in color in the picture becomes hot, so do not touch it when the appliance is in use or before it has completely cooled.



Troubleshooting

Issue	Possible cause	Solution
There is an odor when using the appliance for the first time.	It is not a failure; this is simply due to the heat produced by the heating components.	You can continue to use the appliance.
There are other abnormalities or failures.	Immediately stop using the hair iron and consult with the store of purchase.	

Specifications	
Product number	NTH226
Power Source	100-240V~ 50-60Hz
Power consumption	25-29W
Power cord length	1.5m

In order to download this user manual, please visit the TESCOM website below.
▶ <http://www.tescom-japan.co.jp/global/>

How to Use

How to use the hair iron



To prevent burns, always use a hair band, and place a towel or other material on the back of the neck and shoulders to protect them.



- 1 Insert the power plug into an outlet.
- 2 Set the switch to “1” and begin styling the hair when the iron bar is warm.
 - The iron reaches 100°C in about 45 seconds.
 - ① Take a section of hair about 3cm wide, sandwich it, and slide the iron to the ends of the hair.
- 3 When finished, set the switch to “0” and remove the power plug from the outlet.

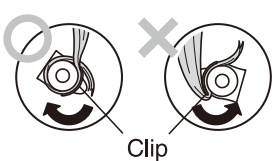
- To curl in an inward direction
- To curl in an outward direction

Face the clip toward the outside and sandwich the hair



Face the clip toward the inside and sandwich the hair

*When curling the hair, do not curl toward the clip.



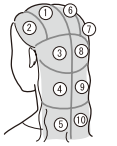
Clip

- 2 Curl the hair and hold for about 5 seconds.
- 3 Open the clip and release the hair from the iron.
 - *Do not pull the hair out of the iron with the clip closed.

Hair arrangement

Brush the hair and divide it into sections as in the diagram below, for more tidy styling.

Divide the hair into sections as in the diagram, and pin the sections with clips.



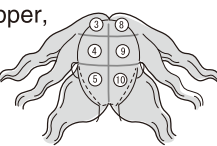
- 1 Part the hair down the center.



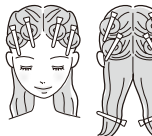
- 2 Divide the left and right sides into smaller sections at the top of the head.



- 3 For the back side of the head, divide the upper, lower, right and left parts into 6 sections.



- 4 Roll up the hair sections and pin them with hair clips.



Style the hair starting with the lower sections.

- Tight curls



Hold the iron upright and curl the hair in a spiral shape from the ends of hair.



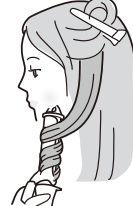
Back

Face the clip toward the outside and curl inward.



Side

Curl inward, as with the back sections.



- To finish, gently loosen all of the curls, and arrange the hair with wax or other products.

- Loose curls



Hold the iron upright, and curl the center of each hair section in a spiral. (Do not curl the ends of the hair.)



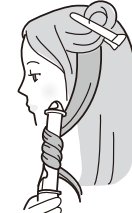
Back

Alternate and repeat inward and outward curls. (Curl the first section in an inward direction, the next one outward, the one after that inward, etc.)



Side

Face the clip toward the inside, sandwich the hair, and curl in an outward direction.

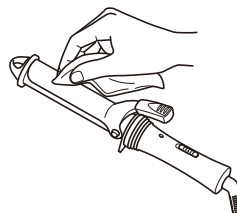


-To finish, use hair cream to lessen the volume.

Product Maintenance

Before cleaning the appliance, turn off the switch, disconnect the power plug from the outlet, and let it cool down.

Wipe away stains with a dry soft cloth.
To clean off difficult dirt, immerse a soft cloth into soapy water or neutral detergent diluted with water, wring it dry and wipe away the dirt.



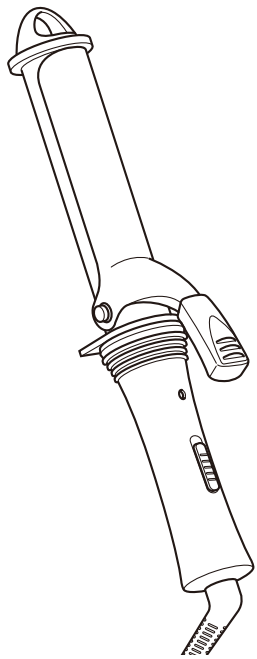
使用說明書

捲髮造型整髮梳

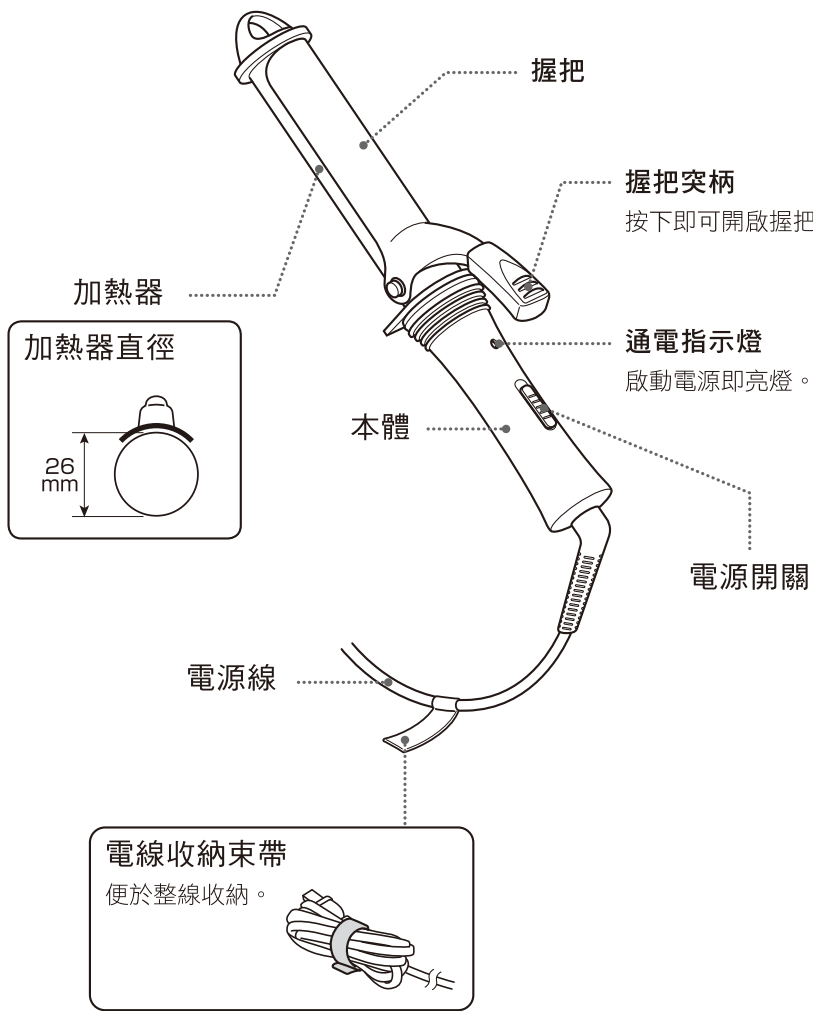
NTH226

家庭用

- 使用前，請務必詳閱本使用說明書，正確使用本產品。
「安全注意事項」能將人身傷害及財產損失防患於未然。
敬務必仔細閱讀並遵守注意事項。
- 使用說明書請務必存放於使用者隨時可翻閱之處。



產品部位名稱與作用



安全注意事項

- 使用之前請先確認產品是否符合使用地區的電壓。
- 使用之前請務必確認電源線、電源插頭、本體是否有損傷。
- 請勿摔落或撞擊產品。
- 請勿拉扯電源線。請勿捲繞在本體上。
- 使用後務必關閉電源，並自插座拔除電源插頭。
- 請勿在產品插上電源的狀態下放置不理。
- 請勿將產品浸水或向產品潑水。手部潮溼時請勿使用。
- 請勿存放於高濕度的地方或水源附近。
- 請勿於幼兒周遭使用。請勿存放於幼兒伸手可及之處。
- 請勿將產品放置於床鋪、紙張、塑膠等易燃物或不耐熱物品上方。
不可在瓦斯或可燃性燃料附近使用。
使用後請等到產品完全冷卻後再進行收納。
- 請勿使用於濕髮上。
- 加熱器勿朝著同一部位持續使用10秒以上。
- 請勿使用於已塗抹燙髮液、造型劑的頭髮上。
- 請勿作為業務用途。此外亦請勿放置於不特定多數人可取用的場所。
- 請勿使用酒精、揮發油、去光水等擦拭。
- 加熱器無法加熱或正常運作時，請立刻關閉電源，拔下電源插頭。
- 未取得執照的修理技術人員，不得將本產品進行分解、修理。
- 在使用本產品時，除非於可負責安全之人監督下使用，或經事前指導，否則不可將本產品提供給知覺、精神能力耗弱者（包含孩童）或不具備使用經驗或知識之人使用。因本產品設計並非供上述之人使用的產品。請注意勿讓孩童持本產品嬉戲。

- 為了避免危險，若電源線破損時，請交由經銷商或具備此類執照者進行更換。

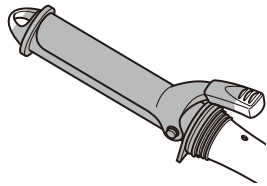


本記號代表本產品不可在近水（浴池、淋浴間等）處使用。

不要靠近浴室、臉盆或其它裝有水的容器使用本產品。
在浴室內使用本產品時，由於在近水處，故使用完畢後應取下插頭，否則即使將本產品斷電亦可能發生危險。
為達到多重保護之目的，建議在浴室之供電電路上安裝殘餘動作電流不超過30mA之漏電斷路器(RCD)，可諮詢安裝人員。

⚠ 小心燙傷

尤其是在使用中與冷卻中，
請勿將產品放置在幼兒可以取得處。
圖中標示顏色的部分溫度很高，
在使用中、冷卻中請勿觸摸。



使用方法

造型整髮梳的使用方法

⚠ 為了防止燙傷，
請務必使用髮圈等，
並以毛巾保護頸部至肩部。



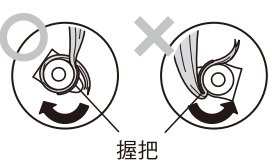
- 1 將電源插頭插入插座。
- 2 開關撥至「1」，待加熱器溫熱後再梳理髮型。
・約45秒溫度即可上升至100℃。
- ① 拿起3cm左右寬度的髮絲，以整髮梳夾住後滑至髮尾處。

● 往內捲時



※ 捲頭髮時，
不要往握把的方向捲。

● 往外捲時

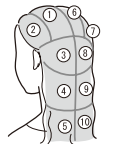


- ② 捲起頭髮，靜止約5秒。
- ③ 鬆開握把，將造型整髮梳由頭髮上取下。
※請勿在握把閉合的狀態下拉扯頭髮。
- 3 使用完畢請將電源開關切換至「0」位置，
並將電源插頭自插座上拔除。

如何打造髮型

梳理頭髮，如下圖所示般地分成不同區塊處理，就能做出漂亮的髮型。

如圖所示，區分髮束後，
用髮夾固定。



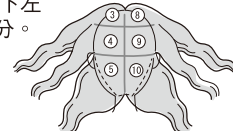
1 將頭頂的頭髮
分成左右2等分。



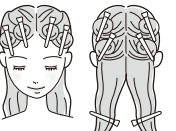
2 將左右兩邊再分別
細分2等分。



3 將頭髮按上下左
右分成6等分。

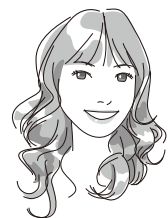


4 將分好的髮束盤成圓圈後，
用髮夾固定。

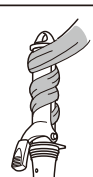


請由下層開始解開髮絲進行造型。

● 捲度明確的捲髮造型

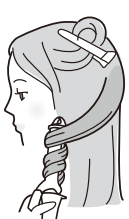


將造型整髮梳立起，
從髮尾開始，
以螺旋狀捲髮。



後側

將握把置於外側，
夾住頭髮往內捲。



側面

和後側一樣往內捲。



・最後再將整體的髮捲適度鬆開，用髮蠟等做出造型。

疑似故障時

異常現象	可能的原因	處理方法
第一次使用時 會產生異味。	因是利用加熱器進行 加熱，故非故障。	請直接使用。
有其他異常或故障。	請立刻停止使用，並洽詢原購買店家。	

規格	
產 品 編 號	NTH226
電 源	100-240V～ 50-60Hz
消 耗 功 率	25-29W
電 源 線 長 度	1.5m

請連結下述 TESCO 網站，下載本使用說明書。
▶ <http://www.tescom-japan.co.jp/global/>

清潔方法

關閉電源後，拔出電源插頭，待冷卻之後再開始清潔。

使用乾燥的軟布擦拭污垢。
污垢難以擦除時，可將軟布浸泡於「肥皂水」或
「以水稀釋的中性清潔劑」中，
確實擰乾後再擦拭。

