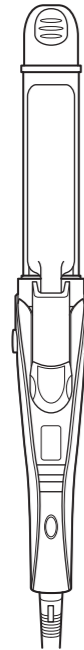


User Manual

Ionic 3 Ways Hair Iron

NTIR1650 For household use only

- Before use, please read this manual and be sure to use the appliance properly. In particular, be sure to thoroughly read and closely follow the Safety Warnings, as they are precautions for preventing personal injury and property damage.
- Store the manual in a location where it can be easily accessed at any time.



Safety Warnings

- Before using the appliance, check that it is compatible with the power supply in your locality.
- Before using the appliance, ensure that there is no damage to the power cord and plug or to the main unit.
- Do not let the appliance fall or sustain impact.
- Do not pull on the power cord. Do not coil the power cord around the main unit.
- After use, be sure to turn off the switch and remove the power plug from the outlet.
- When the appliance is connected to the power supply, never leave it unattended.
- Do not immerse or wet the appliance with water or other liquid. Do not handle the appliance with wet hands.
- Do not store the appliance in areas with high humidity or near water.
- Do not use the appliance within reach of children. Do not store the appliance within reach of children.
- Always place the appliance with the stand, if any, on a heat-resistant, stable flat surface.
- After using the appliance, wait until it has cooled completely before storing it.
- Do not use on wet hair.
- Do not apply the iron bars to the same part of the hair for more than 10 seconds.
- Do not use the appliance on hair to which perming or straightening solution has been applied.
- The appliance is not intended for business use. Keep it away from unspecified usage by a large number of people.
- Never apply alcohol, benzine, or enamel remover.
- If the iron bars do not become hot or if the appliance displays any other abnormalities, immediately turn off the switch and unplug the appliance.
- The appliance must only be disassembled by an authorized repair engineer.
- This appliance is not intended for use by persons (including children) with reduced physical, sensory or mental capabilities, or lack of experience and knowledge, unless they have been given supervision or instruction concerning use of the appliance by a person responsible for their safety.
- Children should be supervised to ensure that they do not play with the appliance.

- If the supply cord is damaged, it must be replaced by the manufacturer, its service agent, or similarly qualified persons in order to avoid a hazard.



This symbol indicates that this appliance must not be used near water, such as baths or basins with shower water.

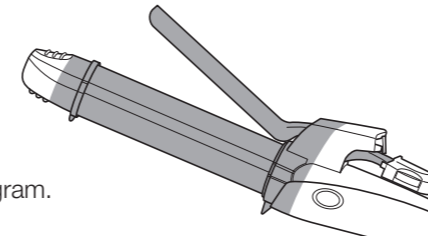
Do not use this appliance near bathtubs, showers, basins or other vessels containing water.

When the appliance is used in a bathroom, unplug it after use since the proximity of water presents a hazard even when the appliance is switched off.

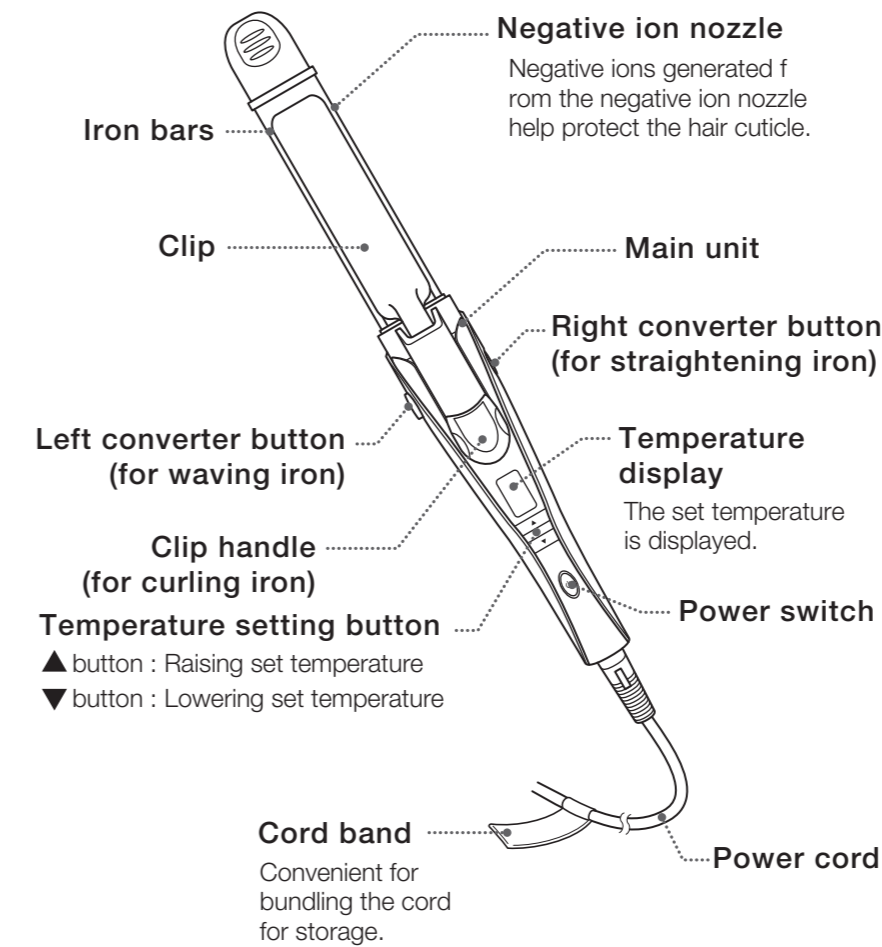
For additional protection, the installation of a residual current device (RCD) having a rated residual operating current not exceeding 30 mA is advisable in the electrical circuit supplying the bathroom. Ask your installer for advice.

BURN HAZARD

Keep appliance out of reach from young children, particularly during use and cool down. During and after use, do not touch the parts shaded in the diagram. Do not allow to touch the skin.



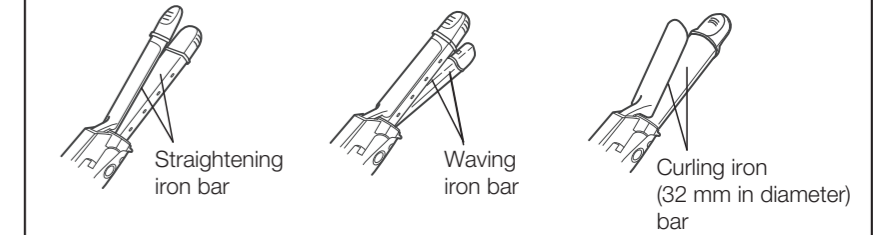
Part Names and Functions



■ Supplemental Item: Hair Design Book

Names of Iron Bars

*Refer to the section entitled "Styling Methods" for instructions on how to convert from one iron bar to another.



About the automatic power-off function

The power will turn off automatically about 30 minutes after it has been switched on. The temperature level display light will flash and a sound will be made about 10 seconds before the power is turned off. Press the ▼ button during that time to keep the power on for about 30 minutes longer.

Specifications

Product number	NTIR1650
Power Source	220-240V~ 50-60Hz
Power consumption	70W
Power cord length	1.7m

In order to download this user manual, please visit the TESCOM website below.

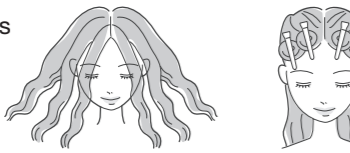
▶ <http://www.tescom-japan.co.jp/global/>

How to Use

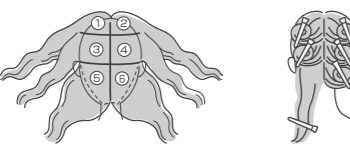
- How to Separate the hair
Separate the hair into segments for easy styling.



- 2 For long hair, twist small segments of the bangs and sections in front of the ears, and hold in place with hair clips.



- 3 Hold the rest of the hair in place in three levels, as shown in the diagram. Starting with the lower sections, release each segment and style.



- ! To prevent burns, always use a hair band, and place a towel or other material on the back of the neck and shoulders to protect them.



- 1 Insert the power plug into the outlet, and hold down the power switch (about 2 seconds).

- 2 Press the temperature setting button to set the temperature. When the temperature has been set, the display light will stop flashing, and a double "beep" sound will be made.

● About the automatic temperature lock function
About 5 seconds after the last operations have been made, the temperature lock display will light up, a short "beep" sound will be made, and the temperature setting will be locked automatically. After pressing the ▼ button twice, a long "beep" sound will be made and the temperature lock will be released, enabling the temperature to be changed.



- 3 After use, hold down the power switch (about 2 seconds), and remove the power plug from the outlet.

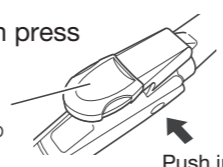
Styling Methods

Use the iron by converting between the different iron bars according to your desired hair style.

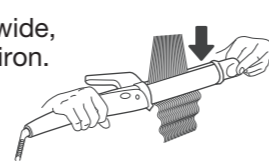
Straightening

- 1 Push in the right converter button and then press down on the clip handle to open the straightening iron.

If the clip handle is set to "curl" then return it to the original position.



- 2 Section off a strip of hair approximately 5 cm wide, and clamp it in the center of the straightening iron.

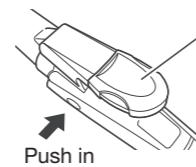


- 3 While holding the closed iron at the tip, slowly slide the iron straight down the hair.

Waving

- 1 Push in the left converter button and then press down on the clip handle to open the waving iron.

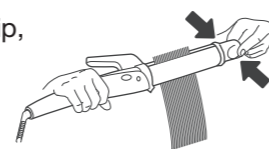
If the clip handle is set to "curl" then return it to the original position.



- 2 Section off a strip of hair approximately 3-5 cm wide, and clamp it in the center of the waving iron.

- For defined waves clamp the hair in strips approximately 3 cm wide, for soft waves clamp the hair in strips approximately 5 cm wide.

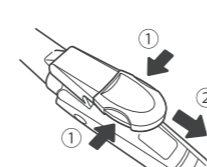
- 3 Close the iron tightly while holding it at the tip, and press the hair for 2-5 seconds.



- 4 Open the iron and clamp the hair again, right under the previously formed wave, and continue to create a series of connected waves.

Curling

- 1 Simultaneously press the buttons on both side of the clip handle (1), while pulling the clip handle toward you (2).



Return the clip handle to the original position by simultaneously pressing the buttons (1) while pushing the clip handle away from you (2).

- 2 Section off a strip of hair approximately 3 cm wide, and clamp it in the center of the curling iron. Then slide the iron down to the tip of the hair and curl the hair.

● Curling Inward

Clamp the hair with the clip oriented outward.



● Curling Outward

Clamp the hair with the clip oriented inward.



*Do not curl the hair in a direction that folds the hair against the clip.



- 3 Hold the iron in place for approximately 5 seconds, and after the hair becomes curled, open the clip and release the hair.

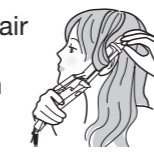
*Do not pull the hair out while the clip is still closed.

Hair Designs

*Hair bands and shoulder towels have been excluded from the illustrations in order to illustrate the hair design methods more clearly.

● Doll-Like Curls

- 1 Curl strips of side hair and back hair alternating between curling inward and curling outward. Curl the hair that frames the face inward for a softer look.



* Wherever more volume is desired, tightly curl the center of the hair strip.



- 2 Apply a styling product and separate curled strips of hair where necessary to unify the overall hair volume.



Finished Look

● Elegant Curls

- 1 Convert to the straightening iron and unify the hair texture. Convert to the curling iron and curl the bottom half of hair inward to produce voluminous look.



*Apply strong curl to side hair to produce voluminous look.

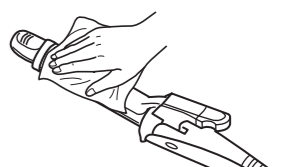


Finished Look

Maintenance

Unplug the appliance and allow it to cool before performing maintenance.

Wipe away any dirt with a dry soft cloth. To clean off difficult dirt, immerse a cloth in soapy water or neutral detergent diluted with water, wring it dry, and wipe away the dirt.



Troubleshooting

Issue	Possible cause	Solution
There is an odor when using the appliance for the first time.	It is not a failure; this is simply due to the heat produced by the heating components.	You can continue to use the appliance.
I cannot feel the effect of the negative ions.	The effect of the negative ions is less apparent in people with the following hair types. · Curly hair · Thin, fine hair · Naturally oily hair · Wavy hair · Short hair	
Other abnormalities or defects are present.	Stop use immediately and consult with the purchasing location.	