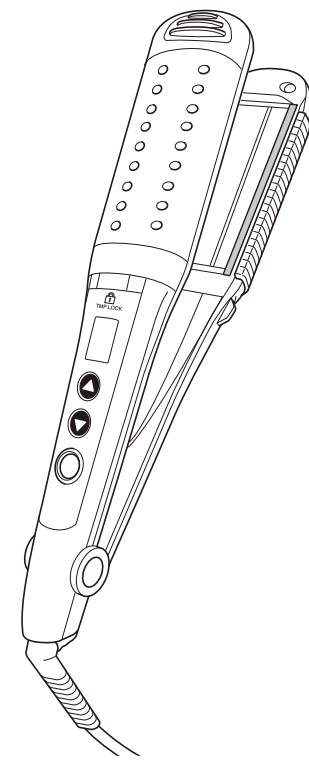


Operating Instructions

Negative ion multi hair iron

NTIR2610 For household use

- Before operating this unit, please read these instructions completely. The manufacturer will not be responsible for any consequence caused by incorrect usage, which is not given in the Operating Instructions.
- Make sure to read the "Safety Warning".
- Please keep the Operating Instructions at a place where the user can see at any time.

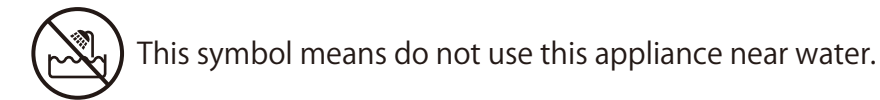


Safety Warning

- Before plugging the iron in, make sure that the voltage of the outlet is between AC 100-240V.
- Before using the iron, make sure that there are no defects in the cord, plug, or main unit.
- Take care not to drop the product or let it bang against anything. Do not tug the cord.
- After use, turn off the switch and unplug the unit.
- Do not immerse the unit in water or other liquids, or let it get wet. Do not use it with wet hands.
- Do not use or store it near the bathtub or in other areas of high humidity or near water.
- Use the product out of reach of children. Store the product out of reach of children.
- Do not lay the product on bedding, paper, or other combustible materials. After using the product, let it cool before you put it away.
- Use the product on hair without applying any styling products. Do not apply the iron to the same section of hair for more than 5 seconds.
- Do not use the iron while a permanent wave agent is applied to your hair.
- Do not use the iron for business. Also, do not place it in a location accessed by the public.
- Do not use alcohol, benzene or remover to clean your iron.
- If the unit does not heat up or if any other malfunction occurs, turn it off and unplug it.
- This product should be disassembled or repaired only by an authorized repair technician.
- This appliance is not intended for use by persons (including children) with reduced physical, sensory or mental capabilities, or lack of experience and knowledge, unless they have been given supervision or instruction concerning use of the appliance by a person responsible for their safety.
- Children should be watched over to make certain they do not play with the appliance.

- If the supply cord is damaged, it must be replaced by the manufacturer, its service agent, or similarly qualified persons in order to avoid a hazard.

WARNING: Do not use this appliance near bathtubs, showers, basins or other vessels containing water.



- The iron becomes very hot. Do not touch the shaded area shown in the illustration during and immediately after use of the iron. Also, do not allow the area to touch your skin.

Finger holding part

- Use the iron after making it semi-dry after using shampoo. In addition, if you hear "crackling" sound while sandwiching your hair in the iron, use it after drying it a little more.

Note that very hot vapor will come out.

- Always use the iron with the moisture vaporization holes facing outward.

Names and functions of each part

Moisture vaporization hole: Allow excess moisture in the hair to vaporize from here. (Very hot vapor will come out steam will not be released.)

Negative ion ejection port: Negative ions produced from the negative ion ejection port protect the cuticle.

Attachment lock (both sides)

Temperature level display: Set temperature is displayed.

Power plug

Power cord

Power switch

Bush

Open/close lock: Lock (up arrow), Unlock (down arrow), Rear side of main unit

Quick cord band: It is useful to put together the cord at the time of folding.

Iron

Finger holding part (both sides)

Camellia slit: It contains microcapsules that are combined with Japanese camellia oil (100%).

Temperature lock display: button (Temperature level up), button (Temperature level down and temperature unlock)

Automatic power OFF function
The power automatically goes off in about 30 minutes after turning the power ON. About ten seconds before the power goes off, the temperature display will flicker and will produce a sound to notify. Press the button while the notification is given to extend the power supply for another 30 minutes.

Accessories

- Volume up attachment
- Curl attachment
- Stand
- Styling attachment
- Curl brush attachment
- Pouch for attachment

You can place the iron while it is still hot.

Stand

| Specification | |
|---------------------------------|--|
| Product name | Negative ion multi hair iron |
| Product number | NTIR2610 |
| Power supply | AC 100-240V 50/60Hz |
| Power consumption | 47-49 W |
| Temperature of the iron section | 200 °C (when ambient temperature is 30°C) |
| Dimensions | Height 85 × width 292 × depth 42mm (body only) |
| Weight | 485g (body only) |

How to use

Fixing and removing the attachment

To fix and detach the attachments, unplug the power cord and make sure that the iron is completely cool.

The attachments are fixed to the lower plate side of the iron.

Location for fixing and detaching (both sides)

Main body fixing direction

Fix the attachments properly.

How to fix

- 1 Hold the fixing and detaching part of the attachment.
 - 2 Insert the attachment to fit into the groove of at both ends of the lower plate and slide until you hear a "click" sound.
-

How to remove

Hold the attachment fixing and removing part and pull out while pressing the attachment lock on both sides of the body.

Attachment lock

How to use the hair iron

- 1 Slide the OPEN/CLOSE lock while the iron part is closed by hand, to set to OPEN (unlocked).
The appliance will malfunction if you turn ON power while it is closed.
- 2 Fix the attachment if you want to use it.
- 3 Insert the power plug into a plug socket.
- 4 Press and hold the ON/OFF switch for about 2 seconds.
A beep will be audible and the temperature level indicator will flicker to show the set temperature (135°C when using for the first time, and the previously set temperature from the second time.)
- 5 Press the button (temperature level up) or button (temperature level down) button to set a temperature level.

| Use | Condition of hair on which it can be used | Temperature |
|-----------------------|---|----------------|
| Making the hair curly | Semi-dry and damp hair | 140°C to 200°C |
| | Dry hair | 100°C to 200°C |
| Hair arrangement | Dry hair | 100°C to 200°C |

You can select settings from 21 steps of 5 °C each within the range of 100 °C to 200 °C.

※ Adjust the set temperature depending on the hair quality. Pay attention while using on tips of hair, as they are tender. We recommend that you use it at low temperature until you get accustomed to using it.

When the set temperature is reached, the indicator will change from flickering to full glow and a "beep" sound will be produced to notify you. The temperature will rise to about 100 °C in 30 seconds (when temperature is set at 200 °C and ambient temperature is 30 °C).

● **Automatic temperature lock function**
After about 5 seconds after the final operation, the temperature lock indicator will turn ON, a "beep" sound will be heard, and the temperature setting will automatically lock. A temperature lock mark will also be displayed on the temperature level display part.

Method to unlock the temperature setting
When you press the button twice, a "beep" sound will be heard and the temperature setting will be unlocked.

Temperature lock mark

- 6 After use, turn off the power switch by pressing for about 2 seconds and unplug the unit.
When removing the power plug from the socket, hold the power plug.
 - 7 After the unit is completely cool, slide the OPEN/CLOSE lock while the iron part is closed by hand to set to LOCK, and keep in a less humid place.
-

Note

- Do not keep for a long time with the switch ON.
- Do not wrap the power cord around the unit. Doing so may break the power cord.
- Do not touch with the hand with hair coloring agent. The paint may peel off.
- Always use stand when keeping the unit with the power switch on.

Maintenance

Turn off the power, remove the power plug and allow the appliance to cool down to clean.

Body and curl attachment

Wipe off dirt with a dry and soft cloth. If the dirt does not fall off easily, soak a soft cloth in "soapy water" or "water with a mild neutral detergent" and squeeze it well, and wipe with it.

Volume up attachment, styling attachment and curl brush attachment

- 1 Remove dust and hair with a soft brush.
 - 2 Wash with water and allow to thoroughly dry.
-

Troubleshooting

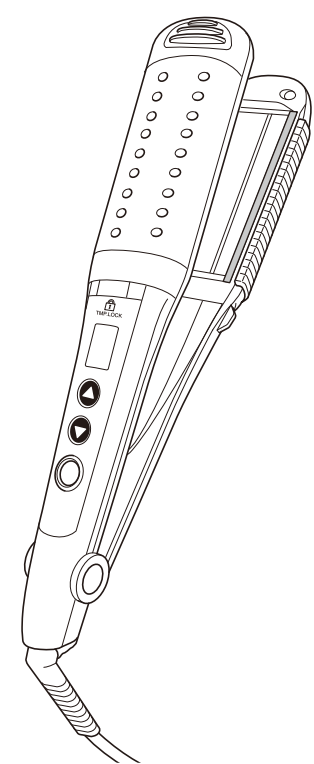
| Occurrence | Reason | Measures |
|---|---|--|
| Smells when using for the first time. | It is not a malfunction. It is caused by heating of heating element. | Use it as is. |
| Power cord is twisted and does not return to its original state. | Power cord is broken. | Please discontinue use immediately. |
| If you rotate or bend the power cord, power will turn on and off. | | |
| Burning smell. | | Please discontinue use immediately. |
| Sometimes the iron part does not heat up. | | |
| The temperature level indicator disappears during use. | | |
| Other failures and malfunctions. | | |
| Power plug is abnormally hot. | Plug is loose. | It may be caused by socket. Please consult your local electronics store. |
| Effect of negative ions cannot be felt. | The desired effect may not be evident in the following people. People with moist curly hair, very curly hair, thin/soft/moist hair. | |
| "Hiss" sound is produced from negative ion ejection port. | This sound is produced by negative ions. It is not a malfunction. | Use it as is. |

使用說明書

負離子多功能整髮器

NTIR2610 家庭用

- 使用前請務必詳閱本說明書，正確使用本產品。以使用說明書內未記載之方式，或未以正確方法使用時，製造商將不負任何責任。特別是「安全注意事項」請務必詳閱。
- 使用說明書請務必存放於使用者隨時可翻閱之處。



安全注意事項

- 電源插頭插入前，務必確認電源為交流電100~240V。
- 使用整髮器前，務必確認電源線、電源插頭與本體並無損傷。
- 注意勿讓產品掉落或碰撞。勿拉扯電源線。
- 使用後務必關閉電源，並自插座拔除電源插頭。
- 產品不可浸泡於水或液體之中，不可沾濕。手部潮濕時切勿使用。
- 請勿使用及保管在浴缸附近、濕度高的場所或近水處。
- 請勿於孩童周遭使用。請勿存放於孩童伸手可及之處。
- 請勿放置於床上、紙類、塑膠等，易燃物或者是耐熱度低的物品上。請勿於瓦斯或可燃性燃料附近使用。使用後，務必待產品完全冷卻後再行收納。
- 請勿於頭髮有塗整髮用品等的狀態下使用。請勿持續在相同部位，使用整髮器達5秒以上。
- 請勿於頭髮有塗燙髮液或直髮劑的狀態下使用。
- 請勿做為營業之用。亦需避免放置於不特定多數人可使用的場所。
- 保養產品時，切勿使用酒精、揮發油、去光水等產品輔助。
- 加熱器無法加熱或無法正常動作時，立即關閉電源，拔除插頭。
- 除取得執照的修理技術士外，不可自行拆解或修理本產品。
- 在使用本產品時，除非於可負責安全之人監督下使用，或經事前指導，否則不可將本產品提供給知覺、精神能力耗弱者（包含孩童）或不具備使用經驗或知識之人使用。因本產品設計並非供上述之人使用的產品。
- 請注意勿讓孩童持本產品嬉戲。

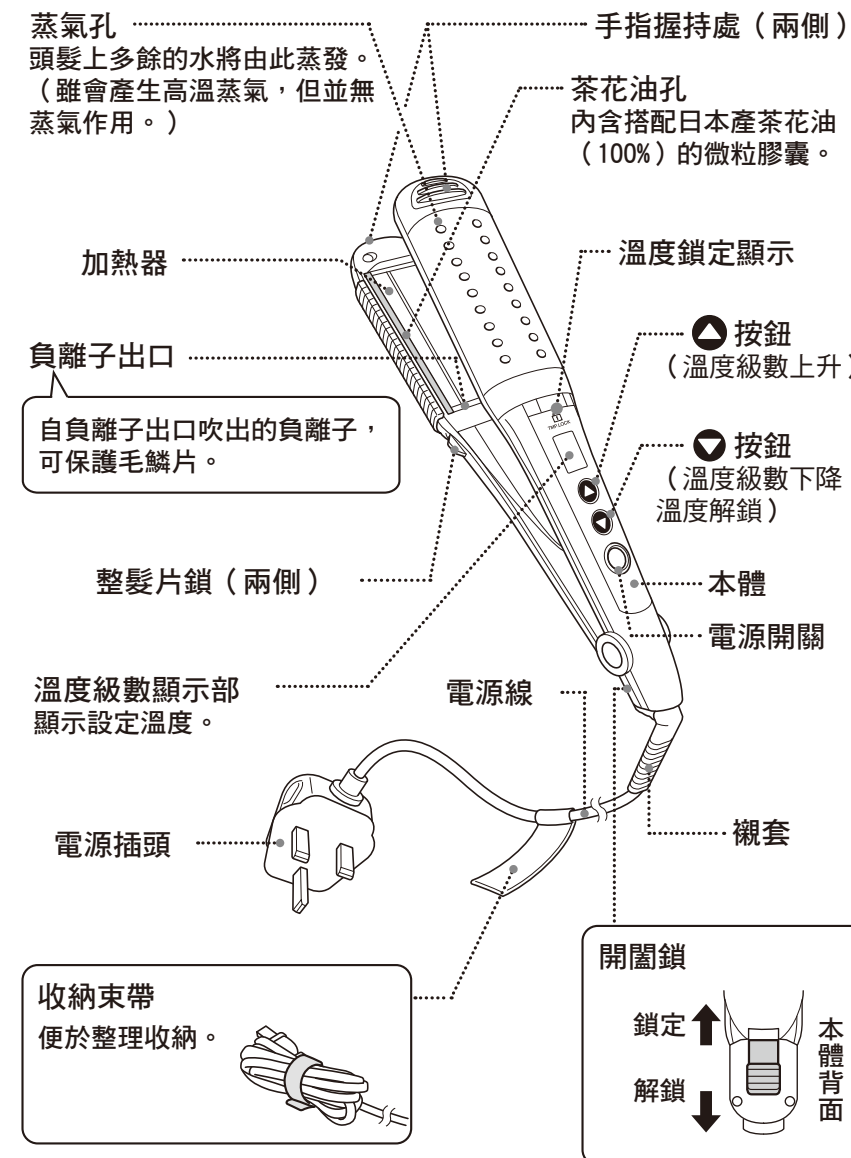
- 為避免危險，電源線破損時，請交由經銷商，或具有該類證照之人更換。

警告：本產品切勿在浴缸、淋浴間、洗臉台或其他盛水容器附近使用。

本記號代表本產品不可在近水（浴池、淋浴間等）處使用。

- 加熱器與整髮片溫度非常高，使用時或剛使用完畢後，切勿觸摸圖中著色部位，或接觸肌膚。
- 洗髮後，務必待頭髮半乾後使用。此外，頭髮夾入加熱器時，若會發出「咄咄咄」聲，請於再度擦拭髮上的水分後使用。
- 蒸氣孔請務必朝向外側使用。

產品部位名稱與作用



自動關閉電源功能
開啟電源後約30分鐘，即自動關閉電源。關閉電源前10秒鐘，溫度級數顯示部會閃爍及會有聲音通知。這段期間只要按下 按鈕，便可將電源再延長30分鐘。

配件

- 豐盈整髮片
- 造型整髮片
- 捲髮整髮片
- 捲髮梳整髮片
- 放置架 (本機在高溫狀態下也可置放)
- 整髮片收納包

| 規格 | | | |
|-------|----------------------|-------|------|
| 產品名稱 | 負離子多功能整髮器 | | |
| 產品編號 | NTIR2610 | | |
| 電源 | AC 100~240V 50/60Hz | | |
| 消耗電量 | 47~49 W | 電源線長度 | 1.7m |
| 加熱器溫度 | 200°C (環境溫度30°C) | | |
| 尺寸 | 高85×寬292×長42mm (僅本機) | | |
| 重量 | 485g (僅本機) | | |

使用方法

如何安裝與拆卸整髮片

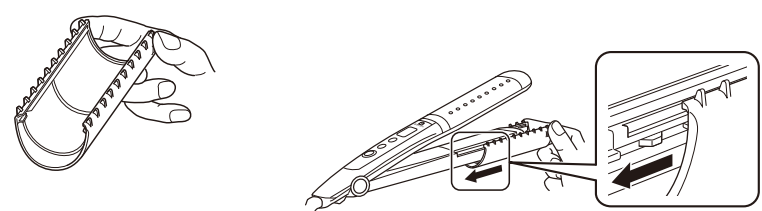
各整髮片在拆裝時，請務必在拔除電源插頭，並確認加熱器已完全冷卻後進行。

各整髮片的安裝位置位於加熱器下襯板處。



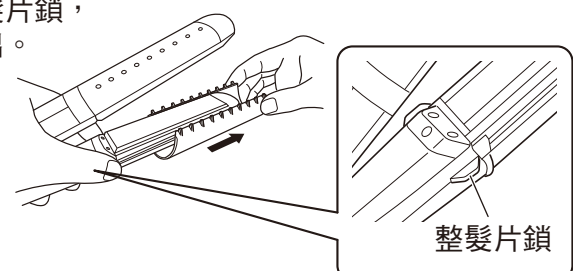
安裝方法

- 1 握住整髮片的拆裝部位
- 2 整髮片插入下襯板兩端的溝槽，滑動內推到聽見「咔嚓」聲。



拆卸方法

按住本機兩側的整髮片鎖，握住拆裝部位後拔出。



整髮器的使用方法

- 1 在加熱器部位閉闔狀態下，以手推動開闔鎖，即可打開（解鎖）。
若閉闔狀態下開啟電源，將導致故障。
- 2 使用整髮片時，請安裝整髮片。
- 3 電源插頭插入插座。
- 4 將電源開關連續按2秒左右。
「嗶」聲響後，溫度級數顯示部上會閃爍顯示設定溫度（首次使用時為135°C，第二次以後則為前次設定溫度）。

- 5 按下 (溫度級數上升) 或 (溫度級數下降) 按鈕，即可設定溫度級數。

| 用途 | 可使用的頭髮狀態 | 溫度 |
|------|----------|-------------|
| 整直亂髮 | 半乾、微沾濕髮 | 140°C~200°C |
| | 乾髮 | 100°C~200°C |
| 造型 | 乾髮 | 100°C~200°C |

溫度範圍為100~200°C，以5°C為間隔，共有21段可供選擇。
※請依髮質調節設定溫度。請注意，髮尾最容易受損。
在尚未習慣之前，建議用低溫。
到達設定溫度後，顯示會從閃爍變成亮燈，並發出「嗶嗶」聲通知。約30秒，便升溫到100°C（設定200°C，室溫30°C時）

注意

- 請勿於電源開啟的狀態下長時間擱置。
- 請勿將電源線纏繞在主機上，以防斷線。
- 手上沾有染髮劑時，請勿觸摸本產品，以免外層塗裝剝落。
- 通電中，要放下本機時，務必放在放置架上。

清潔方法

請切斷電源、拔除電源插頭，待冷卻後再行清潔。

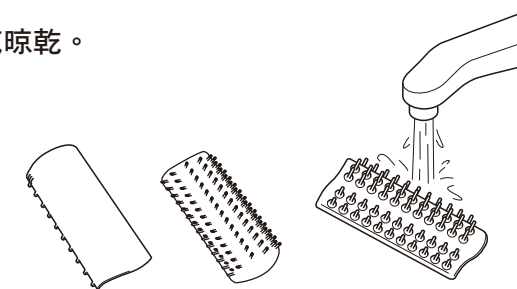
本機、捲髮整髮片

使用乾燥的軟布擦拭污垢。
污垢難以擦除時，可將軟布浸泡於「肥皂水」或「以水稀釋的中性清潔劑」中，確實擦乾後再擦拭。



豐盈整髮片、造型整髮片、捲髮梳整髮片

- 1 以軟梳除去灰塵或頭髮等髒汙。
- 2 以清水沖洗，徹底晾乾。



疑似故障時

| 異常現象 | 可能的原因 | 處理方法 |
|--------------------------------|--|--------------------|
| 首次使用時發出異味。 | 因加熱器過熱導致，並非故障。 | 請直接使用。 |
| 電源線扭轉後無法復原。 | 電源線即將斷裂。 | 請立即停止使用。 |
| 電源線彎曲或轉動電源線後，會發生時而通電、時而不通電的情況。 | | |
| 發出焦味。 | | |
| 燙髮器有時無溫度。 | | 請洽詢臨近電器行。 |
| 燙髮器於使用中時，溫度顯示突然消失。 | | |
| 其他異常與故障。 | | |
| 電源插頭異常發熱。 | 插入插座部位鬆動。 | 原因可能在於插座。請洽詢臨近電器行。 |
| 負離子效果不顯著。 | 使用者如有下述情況，其使用效果將較不明顯。 ● 捲髮 ● 自然捲嚴重 ● 髮質細軟 ● 短髮 ● 原本髮質即屬潤澤型 | |
| 從負離子出風口發出「噠」聲。 | 屬於負離子產生的聲音，並非異常。 | 請直接使用。 |